

CONSULTATION ON RESTRICTIONS ON THE LANDFILLING OF FOOD WASTE

Draft Food Waste Regulations (N I) 2013

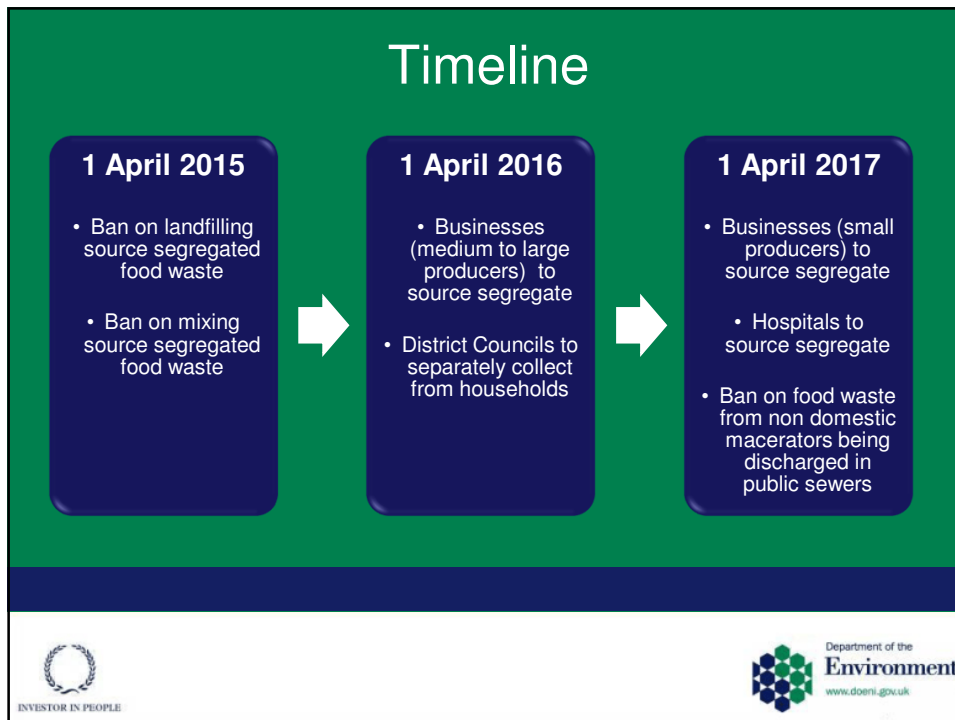
William Dukelow
Environmental Policy Division (EPD)



Proposed Regulatory Measures

- Separate collection of food waste
- Ban on mixing separately collected food waste
- Ban on landfilling separately collected food waste
- Ban on the non-domestic discharge of food waste into public sewer network





CONSULTATION CLOSING DATE

3rd December 2013

Consultation event – ‘Focus on Food Waste’
Friday 15 November - ECOS Centre, Ballymena

Website: www.doeni.gov.uk
Email: wslpr@doeni.gov.uk
Telephone: 028 9025 4780

 INVESTOR IN PEOPLE

 Department of the Environment
www.doeni.gov.uk