

Ballinasloe Composting and Recycling Scheme

Sinéad Ní Mhainnín
Galway County Council
5th February, 2004

Public Private Partnership

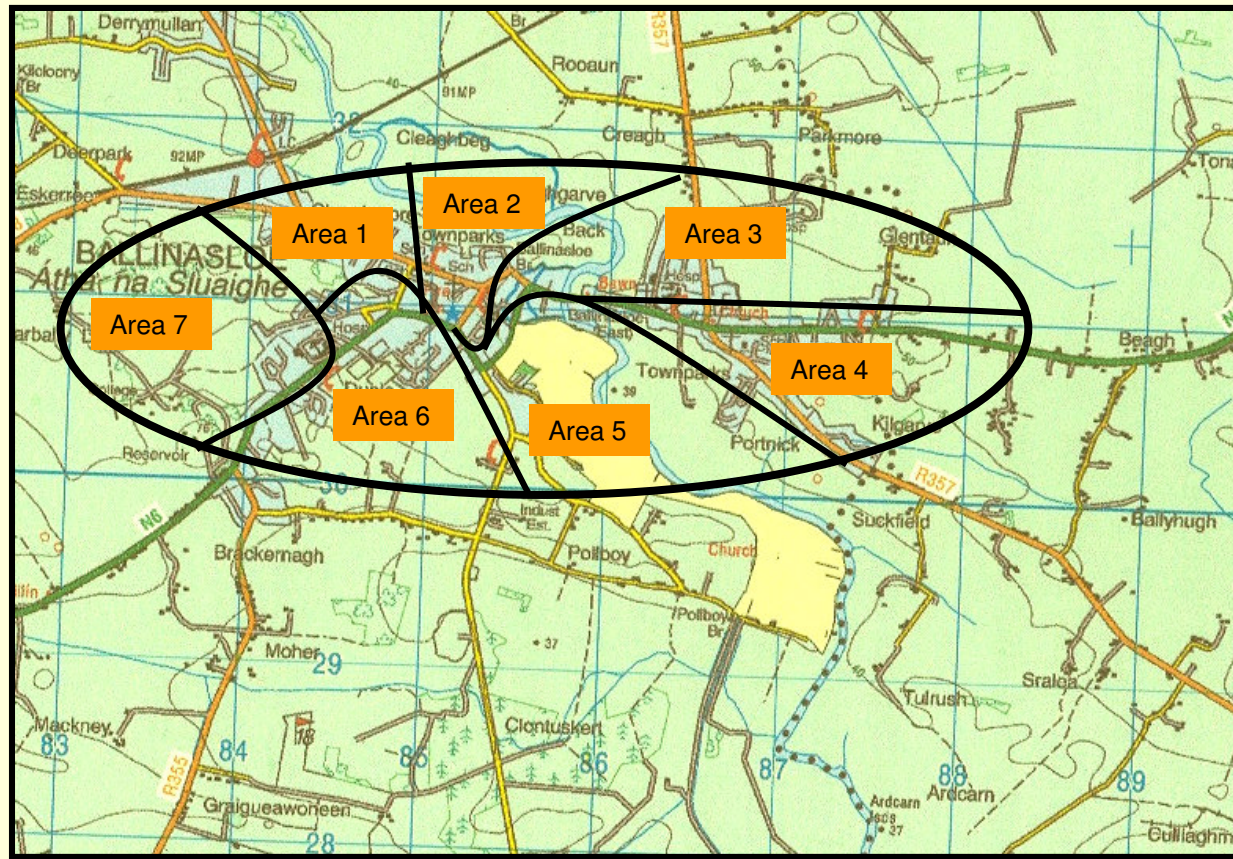
The BCRS has been implemented through a partnership between:

- Galway County Council
- Ballinasloe Town Council
- Wheel - a – Bin / Barna Waste
- Residents

Assign Responsibilities

- **Galway County Council**
 - Awareness campaign
 - Composting facility
 - Management and monitoring
- **Wheel - a - Bin / Barna Waste**
 - Purchase and distribution of bins and bags
 - Collection of segregated waste
- **Ballinasloe Town Council**
 - Providing location

Ballinasloe Area



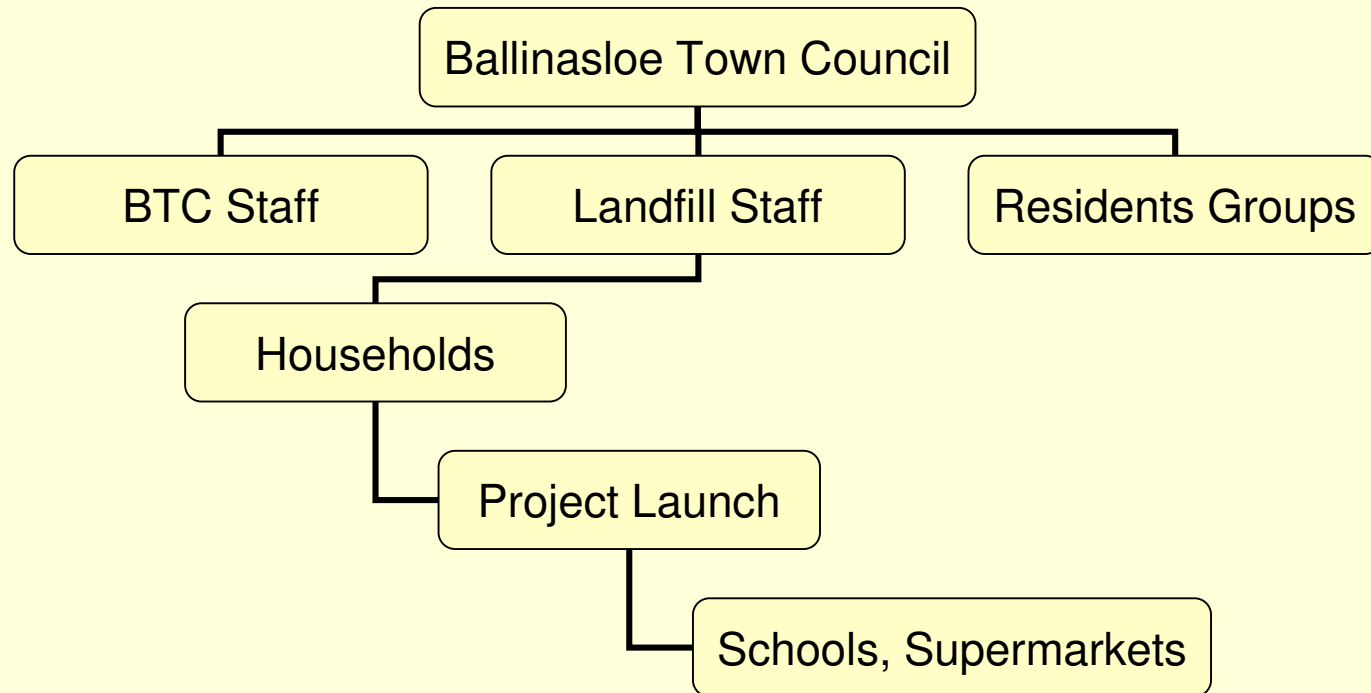
Proposed Scheme

- 1,500 households in the Ballinasloe Area:
 - 2 wheelie bins per household
 - 1 organics
 - 1 landfill waste
 - clear plastic bags
 - cardboard
 - paper
 - plastic

New Collection Service

- **Organic Bin**
 - Collected every second week
- **Recycle Bags**
 - Collected every second week (same day as the organic bin collection)
- **Landfill Bin**
 - Collected every second alternate week

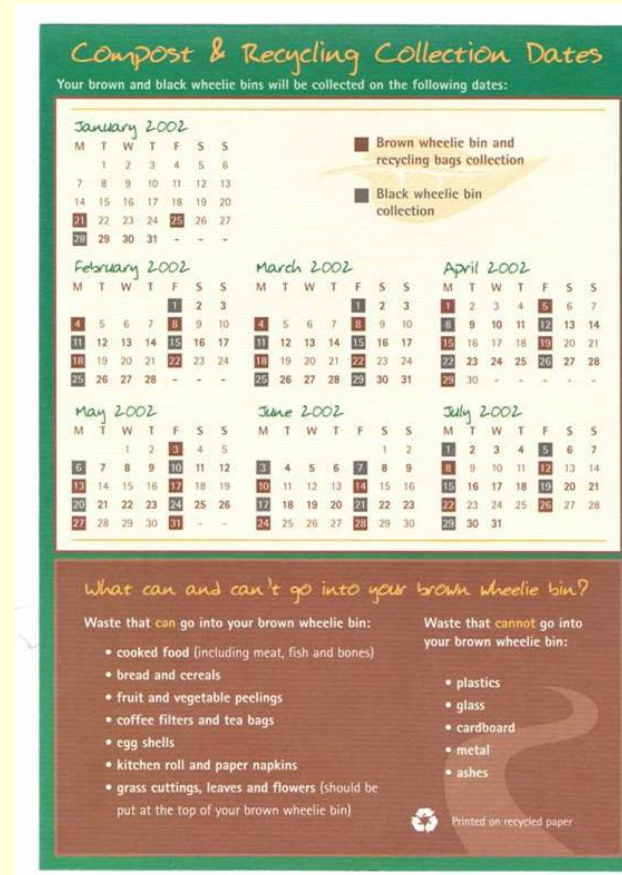
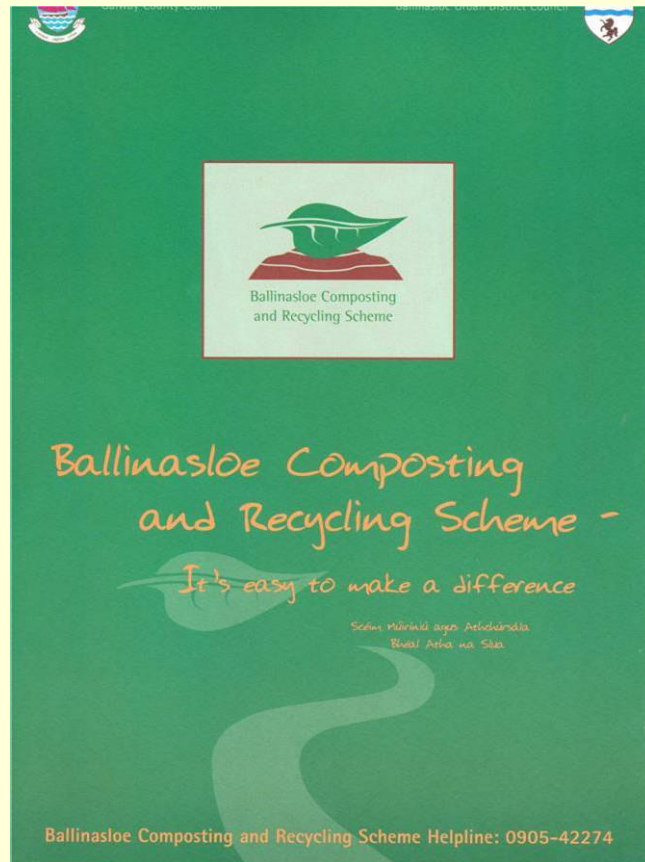
Awareness Process



Documentation

- A4 Information Brochure
- A5 Information Brochure
- A5 Calendar

Information Leaflets



Kitchen Waste



Household Awareness Campaign

- 1500 households
- 7 areas / 4 teams
- estimated number of households in each area and set a timeframe
- door to door – 30 households pn/pt

Completed during November-December 2001

Information

- Project Launch –
 - Invited members of all residents committee
 - Elected representatives
 - Council officials
 - Open invitation to anyone else

Information

- Supermarket Campaign
 - Samples of what went into each bin
- Schools
 - Awareness days on the new waste collection scheme
- General Public Awareness Campaign
 - local radio
 - local newspaper

Difficulties - Doorstep

- Collection changed to bi-weekly collection
 - no weekly landfill collection
- Resistance to another waste initiative in the Ballinasloe Area
- Some areas were particularly difficult to deal with
 - various estates, apartments (transient population)

Difficulties – Collection

- Bin Contamination
 - Bright red stickers were attached to contaminated bins by drivers
 - Council staff followed trucks on the various routes to talk to householders / leave further information
 - Following a period of grace contaminated bins were not collected

Composting Process

In-Vessel System :

- compost is contained which eliminates odours and leachate
- computer controlled system
- produces a high quality product

Composting Process

- organic matter mixed with woodchip
- loaded into the in-vessel container
- air passes through bio-filter
- temperature controlled by computer system

Timeframe

- **14 days in-vessel container**
- **Curing pad for 8-10 weeks**
- **Compost is screened**
- **Tested by Bord na Móna**
- **High quality compost ready for market**

Initial Costings

Initial cost covered by
Galway County Council

- Capital Costs €300,000
- Public Awareness € 25,000
- Annual Operating Costs € 44,000

Cost to the Householder

- No increase other than the standard annual increase from waste contractor

Compost Use

- Compost was made available to householders participating in the scheme
- Used as a surface mulch on flower beds in public area



Comhairle Chontae na Gaillimhe
GALWAY COUNTY COUNCIL



Comhairle Bhaile Béal Átha na Slua
BALLINASLOE TOWN COUNCIL

**Compost
from
Ballinasloe Composting
and Recycling Scheme
has been used in this area**



Ballinasloe Composting
and Recycling Scheme

Positive Note

- the scheme is very successful with approx. 500 tonnes of organics being composted per annum
- low contamination rates
- public have embraced scheme
- reduction in organics going to landfill

Conclusion

- Private Waste Contractors
 - Intend to provide the County with organic waste collection service during 2004
 - Environment Section of Galway County Council will attend public meetings with the various contractors to promote the segregated collection of organics

Cured and Screened Compost

